



## Decision-making in non-invasive neuromodulation in children

Juliana Barbosa Goulardins<sup>1</sup> 

Rachel Fontes Baptista<sup>2</sup> 

Anna Fontes Baptista<sup>3</sup> 

Kátia do Monte-Silva Machado<sup>4</sup> 

Marcos Almeida Matos<sup>5</sup> 

<sup>1</sup>Corresponding author. Escola Bahiana de Medicina e Saúde Pública (Salvador). Bahia, Brazil. [juligoulardins@gmail.com](mailto:juligoulardins@gmail.com)

<sup>2</sup>Serviço de Perícias Judiciais (Rio de Janeiro). Rio de Janeiro, Brazil.

<sup>3</sup>Centro Universitário Augusto Motta (Rio de Janeiro). Rio de Janeiro, Brazil.

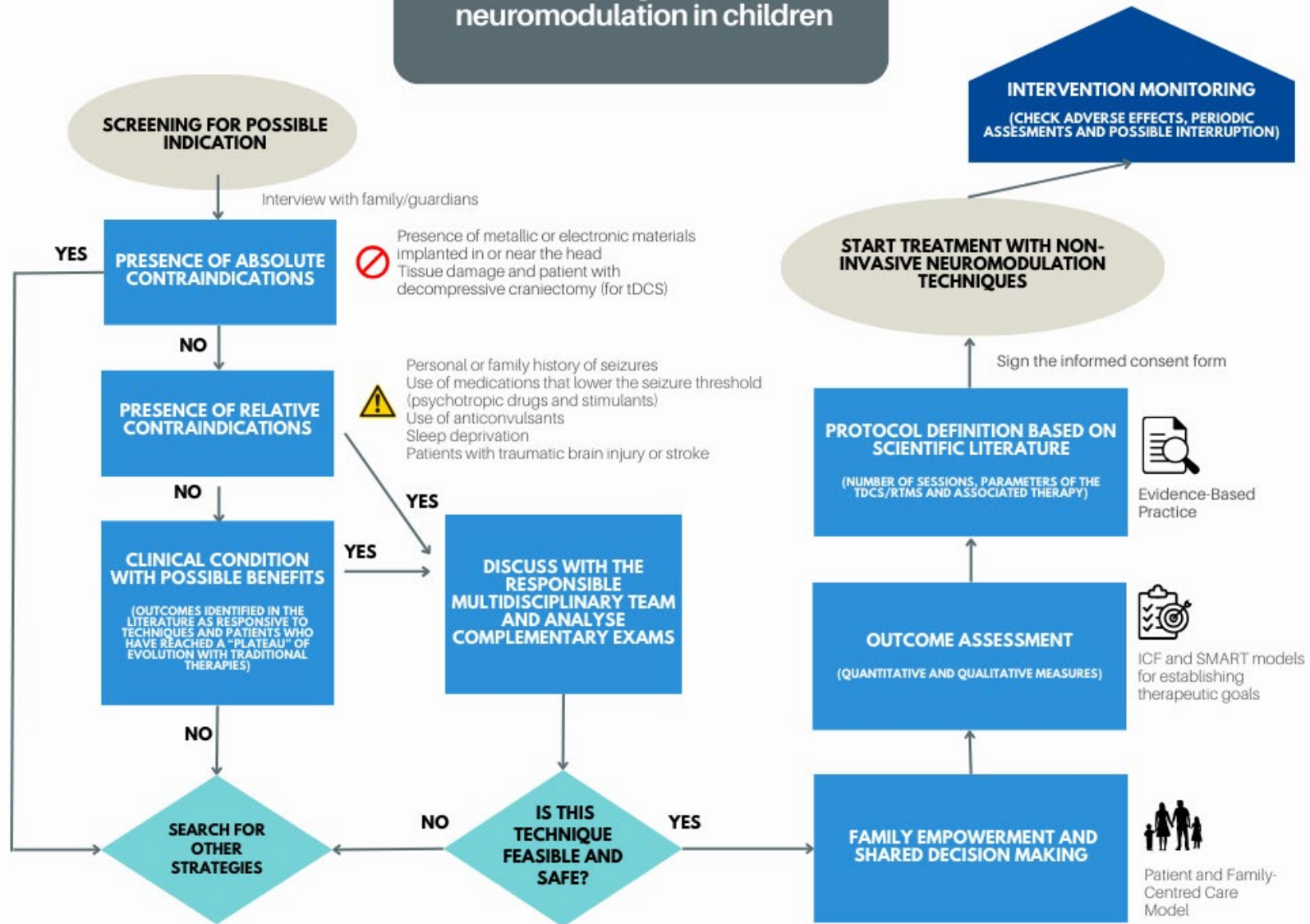
<sup>4</sup>Universidade Federal de Pernambuco (Recife). Pernambuco, Brazil.

<sup>5</sup>Escola Bahiana de Medicina e Saúde Pública (Salvador). Bahia, Brazil.

**ABSTRACT | BACKGROUND:** Electrical and magnetic stimulation of the nervous system has been used to treat cerebral palsy, autism spectrum disorder, attention deficit hyperactivity disorder, among other childhood conditions. **OBJECTIVES:** This infographic was designed to elucidate the decision-making process entailed in selecting neuromodulation protocols for children. **METHODS:** The development of this infographic was guided by the principles of several healthcare philosophies: (1) the Biopsychosocial Model of the International Classification of Functioning, Disability, and Health;<sup>1</sup> (2) Patient- and Family-Centered Practice;<sup>2</sup> (3) Evidence-Based Practice;<sup>3,4</sup> and (4) the SMART model (Specific, Measurable, Attainable, Realistic/Relevant and Timely outcome) for establishing therapeutic goals.<sup>5</sup> **RESULTS:** This visual tool delineated value points that should be considered before initiating any neuromodulation treatment, conceptualized within a structured framework across various levels, including screening, feasibility and safety assessment, selection of a "SMART" outcome, evaluation of complaints, protocol definition, risks clarification, assessment of benefits and cost-effectiveness, and collaborative and empowered participation of parents/caregivers. **CONCLUSION:** Neuromodulation protocols' definitions involve a complex process, encompassing choices related to techniques, targets, parameters, distribution and number of sessions, and the potential incorporation of other therapeutic modalities. This process must be tailored to specific objectives to ensure that treatment can yield optimal results within the users' functional conditions. Our infographic can serve as a tool for comprehensively visualizing the entire process and making well-informed choices in a clear, concise, and organized manner. Nevertheless, it is essential to acknowledge that this model is not flawless and should be refined further to advance toward more humanized and responsible care.

**KEYWORDS:** Clinical Decision-Making. Transcranial Direct Current Stimulation. Transcranial Magnetic Stimulation. Child.

# Decision making in non-invasive neuromodulation in children



## Infographic legend

ICF: International Classification of Functioning, Disability, and Health.<sup>1</sup> SMART model for establishing therapeutic goals: Specific, Measurable, Attainable, Realistic/Relevant and Timely outcomes.<sup>5</sup>

### Acknowledgement

This study received support by the Fundação de Amparo à Pesquisa do Estado da Bahia - FAPESB (Foundation of Assistance to Research of the State of Bahia).

### Authors' contributions

All authors have made substantial contributions to the study, approved the final version to be published, and are responsible for all aspects of the work.

### Conflicts of interest

No financial, legal, or political conflicts involving third parties (government, private companies, and foundations, etc.) were declared for any aspect of the submitted work (including but not limited to grants and funding, advisory board participation, study design, manuscript preparation, statistical analysis, etc.).

## References

1. World Health Organization. International Classification of Functioning, Disability and Health: ICF. World Health Organization, 2001. Available at: <https://www.who.int/standards/classifications/international-classification-of-functioning-disability-and-health>
2. Mastro KA, Flynn L, Preuster C. Patient- and family-centered care: a call to action for new knowledge and innovation. *J Nurs Adm* 2014;44(9):446-451. <https://doi.org/10.1097/naa.0000000000000099>
3. Lefaucheur JP, Aleman A, Baeken C, Benninger DH, Brunelin J, Di Lazzaro V, et al. Evidence-based guidelines on the therapeutic use of repetitive transcranial magnetic stimulation (rTMS): An update (2014-2018). *Clin Neurophysiol*. 2020;131(2):474-528. <https://doi.org/10.1016/j.clinph.2019.11.002>
4. Lefaucheur JP, Antal A, Ayache SS, Benninger DH, Brunelin J, Cogiamanian F, et al. Evidence-based guidelines on the therapeutic use of transcranial direct current stimulation (tDCS). *Clin Neurophysiol*. 2017;128(1):56-92. <https://doi.org/10.1016/j.clinph.2016.10.087>
5. Bovend'Eerd TJH, Botell RE, Wade DT. Writing SMART rehabilitation goals and achieving goal attainment scaling: a practical guide. *Clin Rehabil*. 2009;23(4):352-61. <https://doi.org/10.1177/0269215508101741>